



## In This Issue

- Glen Fair Recap..... 1
- Message from the President..... 2
- Anti-Rodenticide Resolution..... 3
- News and Notices ..... 4-6
- In the Kitchen with Diane ..... 6
- At Your Service ..... 7
- Membership Application..... 8

## A Transformed Glen Fair

By Elke Heitmeyer

As the times they are a-changing, our Annual Glen Fair has also undergone a change. We did not have the Fooks' yard this year, so we had to change things. Not all was perfect, but we learned a lot and everybody had a grand time anyway. We were very grateful to have the use of the Rapaports' yard for the food area. It was shady and worked out really well. The entertainment stage was in the Twomeys'



*Glen Cleaner Abraham Alfí, a strong Glen supporter, celebrated his 65 birthday at the fair, surrounded by his family. "Please don't retire"!*



*Karen Simonson and husband Barton Phelps dancing up a storm*

driveway and the beverages occupied the Holabirds' carport – the fair organizers really appreciate the great cooperation of these true Glen families! Thanks to Steven Foonberg at Beverly Glen /

Westside Realty, who were very generous with a fabulous wine tasting bar and many Glenites also really enjoyed Justin Bourret's homemade brews!

Fabroccini and the Glen Deli had once again very generously donated to the Fair, as did the Glen Market, who donated all soft drinks and provided the beer at cost. True to form, the Glen community came together and many of our wonderful home chefs provided delicious food and desserts! We were able to feel well nourished by Ned and Pat Wrights' Chili and the BBQ crew whipped up some mighty fine burgers and hot dogs! The Fire Department was there delighting the kids with their big red truck, members of our Police also graced the event!

The entertainment was really top class. A major highlight was when our City Councilmember Paul Koretz got up and sang a very fun tune with the Flatland Band. Nobody knew that singing is one of his many talents!

Dancers Brandi Centro and Jacqueline Eusanio delighted the audience with their magical performances in memoriam of Jane Padget, aka Shira the Belly Dancer.

Young and old got to enjoy and dance with the beloved Flatland Band with Dennis Aigner and our other longtime friends. Personally, I think they have played at every Fair I have worked on, that means about 35 years of serenading the Glen for a beer. Attendees were also wonderfully entertained by Joe Kohansky, trombone, leading the Glen Kids Parade and the bands Imaginary Friend with Barrie Berg; and Umbra, Band du Jour with Joe Kohansky

Wade Novin provided the top quality sound, which is really appreciated in our outdoor setting.

Many Glen folks were delighted to be able to buy beautiful and often unusual items and gifts from some of our amazing vendors. The fabulous PlayGroup is a major part of our fair and the kiddies were treated to some fantastic bounces and very fun



*Brandi Centro*



*Councilman Paul Koretz joins in*

games. All Glen kids are just adorable! The setup/clean up crew did an outstanding job, given the new terrain and the gate security team kept everything calm and orderly!

*Photos: Elke Heitmeyer, Dan Palmer, Gillian Calof Thank you to our Volunteers! See listing on page 4*



## RESIDENTS OF BEVERLY GLEN ANNUAL MEETING

October 16th. 3 to 5:30 pm.

Interact with your local city council staff, police and fire departments – and your wonderful neighbors.

Your presence will show them they need to care about us!

Delicious refreshments

Les & Dorothy River Community Center aka LRCC  
10409 Scenario Lane

## Message from the President

Greetings Glenites! Autumn is upon us. The important Annual Community Meeting is happening on October 16th, 2016 at 3:00 pm. We all gather, hear from our City Officials, local Police and Fire Departments personnel. And this is your opportunity to tell them what you think should happen in your neighborhood! As with all Glen events, there will be delicious libations!

Together we will look at what our community needs, where perhaps you might fit effectively. Residents of Beverly Glen will decide how we can serve our community and elect our new Board Members. I want to encourage you to step forward and become part of this volunteer community organization. I have personally learned so much about our canyon, the inner workings of our City and have made many friends. I have experienced my years on the Board as wonderful years of joy and learning, coupled with the satisfaction of giving back.

Thank you all for this opportunity! Now it is time for me to step aside and allow others to guide this organization. We have several positions that are available this year. Vice President, Traffic, and Zoning are all open for 2017. If you care about any of these or other areas, please let us know as soon as possible. Your participation will be so appreciated and benefit all – including yourself!

I will see you in October.

*Tensie Palmer*

**Do you love and know our Glen Canyon, its history and its people? Or at least some of it and them? Do you enjoy writing?** Our much read Glenite needs a new editor. It would only mean every 3 months collect articles from community members, edit them if necessary, and pass them on to our newsletter designer for typesetting. Easy and fun! Please contact [Glenite@beverlyglen.org](mailto:Glenite@beverlyglen.org) with questions or if interested.

## Friends of The Glen



## The Glenite

Founded 1953

Published by The Residents of Beverly Glen, Inc.  
10409 Scenario Lane • Los Angeles, CA 90077

[www.beverlyglen.org](http://www.beverlyglen.org)

RBG Board of Directors Roster and Contact Info:

President	Tensie Palmer <a href="mailto:president@beverlyglen.org">president@beverlyglen.org</a>
Vice President	Gillian Calof <a href="mailto:vp@beverlyglen.org">vp@beverlyglen.org</a>
Treasurer	Karen Simonson <a href="mailto:treasurer@beverlyglen.org">treasurer@beverlyglen.org</a>
Secretary	Hildreth Simmons <a href="mailto:secretary@beverlyglen.org">secretary@beverlyglen.org</a>
Board Member at Large	Barbara Rapoport <a href="mailto:barbarar@ucla.edu">barbarar@ucla.edu</a>
Emergency Preparedness	Dan Palmer <a href="mailto:emergency@beverlyglen.org">emergency@beverlyglen.org</a>
Hillside Federation Rep	Stephen Benson <a href="mailto:hillside@beverlyglen.org">hillside@beverlyglen.org</a>
LDRCC Representative	Janine Gershon <a href="mailto:ldrcc@beverlyglen.org">ldrcc@beverlyglen.org</a>
Membership	Bob and Elaine Grunauer <a href="mailto:membership@beverlyglen.org">membership@beverlyglen.org</a>
Neighborhood Council	Robert Ringler <a href="mailto:babcnc@beverlyglen.org">babcnc@beverlyglen.org</a>
Playgroup Representative	Daina Danovitch <a href="mailto:playgroup@beverlyglen.org">playgroup@beverlyglen.org</a>
Social	Vacant
Traffic	Lawrence Imel <a href="mailto:traffic@beverlyglen.org">traffic@beverlyglen.org</a>
Website	Jeff Schroeder <a href="mailto:website@beverlyglen.org">website@beverlyglen.org</a>
Zoning & Development	Chuck Buell <a href="mailto:zoning@beverlyglen.org">zoning@beverlyglen.org</a>
Representative-at-Large	Jim Earnhardt <a href="mailto:emergency@beverlyglen.org">emergency@beverlyglen.org</a>

### The Glenite

Editor: Elke Heitmeyer  
[glenite@beverlyglen.org](mailto:glenite@beverlyglen.org)

Photos: Elke Heitmeyer, Dan Palmer, Gillian Calof  
Design by Bacall:Creative [www.bacallcreative.com](http://www.bacallcreative.com)

Please submit articles and notices to:  
[glenite@beverlyglen.org](mailto:glenite@beverlyglen.org) (electronic versions only please!)

Glenite Winter 2016 deadline:

**Submissions needed by October 31, 2016**



## Residents of Beverly Glen ANTI-RODENTICIDE RESOLUTION

It is well documented that rodenticides are passed up the food chain to other animals that prey on rodents, resulting in painful



death. Alternatives such as mechanical traps and barn owls, who are great rodent hunters, are some examples of rodenticide-free ways to control pests. At its June meeting the Board of Directors approved an important anti-rodenticide resolution that recommends the use of alternatives to poison for pest control in the Glen.

Whereas, the Residents of Beverly Glen, Inc. is organized for the purposes of the following:

- To improve the quality of life in the Beverly Glen community;
- To enhance the safety and value of homes and home sites in the community;
- To provide the community with an organized means for group discussion, recreation and sociability;
- To ensure the responsible development of land within the community

and in neighboring communities that affect Beverly Glen;

- To control and reduce traffic in the Beverly Glen community;
- To give all residents of the community, owners and renters alike, a sense of belonging and continuity by making them aware of the history of Beverly Glen, its present role in the larger Los Angeles community, and the problems and possibilities for its future development;
- To take steps to assist the community in preparing to handle a community-wide emergency; and
- To take such community action as needed for the accomplishment of the above purposes.

Whereas, consistent with the above purposes, the Board of Directors wishes to maintain a community with a rich and healthy fauna and flora; and

Whereas, numerous studies have shown that the use of rodenticides to control rodents causes poisons to be passed up the food chain to other animals that prey on such rodents, resulting in internal bleeding, emaciation, mange, and dehydration, eventually leading to death.

Now therefore, be it resolved that the Residents of Beverly Glen, Inc. hereby establishes a recommendation to cease the use of rodenticides in the Beverly Glen community and promotes the use of alternatives to rodenticides including alternative pest control (such as mechanical traps and barn owl nesting boxes); preventing rodent issues and the conditions that lead to rodent problems (taking measures such as keeping trash and recycling areas clean, not overfilling containers), and preventing access to areas such as cracks and crevices in homes or garages, which provide conditions for rodents to thrive.



FRIENDS OF THE GLEN

### GLEN MARKET

*Large Selection of Fine Wines & Spirits Available*



**1603 N. Beverly Glen Blvd. • Bel Air, CA 90077**  
Delivery Available • 310-4741272

### *Delivery Available*

**Specials**

Johnnie Walker Blue Label  
Caymus Cabernet Sauvignon  
Silver Oak Alexander Valley Cabernet

**Cabernets**

Opus One  
Far Niente  
Duckhorn  
Robert Mondavi Reserve

**Chardonnays**

Far Niente  
Cakebread Cellars  
Chateau Montelena

**Reds**

The Prisoner  
Abstract

**Champagnes**

Dom Perignon  
Veuve Cliquot

**Malt Whiskeys**

Macallan  
The Glenrothes

**We also have bourbons, gins and much more . . .**



## Where Are They Now?

### Warren Garfield

**W**arren Garfield, whom you might remember as a member of the Barbershop Quartet at recent Glen Fairs, has a long and storied history in the Glen. From 1976 to 2000, he held several positions on the Board of the Residents of Beverly Glen Association, including President, Traffic Committee Chair and Emergency Preparedness Committee Chair. In addition, he chaired the Les River Community Center Board.

In 1974 Warren bought a home on the north end of the Glen Canyon, across from Briarwood Dr. which he still owns, but has rented out now, but still does the gardening himself. He remembers the extreme floods turning the Boulevard back into muddy river, when it rained for two weeks straight.

During his professional life, Warren worked in film advertising, making movie trailers (previews) for Paramount and Disney studios and then for his own company, Coming Attractions, which he later operated from his house. In 2000 he retired and moved to the Laurel Canyon-Mulholland hillside with his girlfriend Joy. You might recall the exquisite tiles Joy sold at this years fair.



Warren (far right) singing "I Am a Glenite Man" with Chris H and David R.

Today Warren maintains a busy life. Apart from the weekly gardening in the Glen, he really enjoys singing in a chorus, the Valley Harmony Singers. They enter contests, put on original shows and perform Singing Valentines in barbershop quartets. [www.valleyharmonysingers.org](http://www.valleyharmonysingers.org)

He is most proud of his program, Free Folk Singing Concerts, sponsored by the Topanga Banjo Fiddle Contest, in which folk songs are performed every month to children and seniors in L.A. libraries and schools. See [www.topangabanjofiddle.org/FolkSinging](http://www.topangabanjofiddle.org/FolkSinging)

Finally, Warren recently joined Reading Partners, a program for tutoring slow-reading children at Carthay Elementary school. Even though he enjoys his life with Joy, he still misses the Glen, his house and most of all, the community.

The editor, on behalf of the entire community wishes to thank Warren for his many years of dedicated service!

Thank you to all the wonderful Glen Fair volunteers worked hard and had a great time as well:

Abraham Alfi, Carol Barring, Kira and Stephen Benson, Justin Bourret, Chuck Buell, Gillian Calof, Jane Curry, MarieClaire Costello, Daina Danovitch, Mary Donkersloot, Brad Elterman, Pat Forrest, Janine and Jadon Gershon, Suzanne Green, Bob Grunauer, Elke Heitmeyer, Chris and Rhoda Holabird, Lawrence Imel, Kerry Jensen, Teddi, Gareth and Kriffin Kantz, Frank and Sally Krasne, Christiane Moses, Marc Olevin, Renee Ordeneaux, Dan and Tensie Palmer, Joni Pearson, Karen Pollack, Barbara and David Rapaport, Zeke and Cole Rippy, Hildreth Simmons, Karen Simonson, Damon Steele, Diana and son Philip Walstrom, Brian Zagorski, and Will Znidaric.

## SEPTEMBER IS EMERGENCY PREPAREDNESS MONTH

by Dan Palmer

Do you and your family have a PLAN? What for, you ask? Emergencies that could happen any day. If we plan for them, we have a better chance of surviving them.

Have you set up your Communication Plan? <https://www.ready.gov/make-a-plan#>

Do you have 7-10 days of non-perishable food and water set aside for each family member including pets? <https://www.ready.gov/september#> How about your car? (Keep your gas tank full, no less than half empty), Office? School?

Do you have tools that may be needed if huge trees go down and block evacuation routes?

How is your property looking? Brush Clearance is a year round event in the Glen. Do you have a garden hose that will reach all the way around your home?

Contact me, Dan Palmer at [emergency@beverlyglen.org](mailto:emergency@beverlyglen.org), with any questions and suggestions. I look forward to hearing from you and seeing you at the Annual Meeting on 10/16/2016.

## COYOTE ALERT!! NEVER FEED COYOTES

There have been sightings of Coyotes in the area. Coyotes are wild animals that may come out at any time of day or night. A number of factors encourage coyotes to interact with humans including: people leaving out food for animals and the presence of unenclosed refuse containers.

Please report wildlife sightings and issues to: Los Angeles Animal Services at (888) 452-7381. Read more on this in the Winter Glenite.

## LES & DOROTHY RIVER COMMUNITY CENTER IT'S YOUR CENTER

Available for rent \$50 evenings and weekends.

It's a superb location at 10409 Scenario Lane — the perfect setting for adults or children's group activities, classes, discussion groups, meetings, birthday parties, rehearsals, seminars, exercise sessions, etc. The Center can accommodate up to 40 people indoors, more outdoors with:



- Large, comfortable main room with stone hearth and fireplace
- Children's outdoor play apparatus, swings, wooden train, etc. in a spacious yard
- Outdoor patio area with shade trees
- Chairs (both adult and kiddie size)
- Some kitchen facilities (no stove)
- Parking on Beverly Glen Place or Blvd. only (no parking on Scenario Lane permitted)
- Discounts available for multiple use

To schedule the LDRCC for your event, contact [ldrcc@beverlyglen.org](mailto:ldrcc@beverlyglen.org).

Every year, the Board of the LDRCC sets up a fund for scholarships for Glen Residents who have a child attending Playgroup. Applications for future scholarships are being accepted. Contact Hadassa Gilbert 310.474.7487.

## New Signs in the Glen

Soon you will notice signs along the Boulevard:

**Please Drive Slowly We Love (heart) Our Children**

**Please Drive Slowly We Love Our Children (with Heart Graphic)**

Traffic is the biggest issue in the Glen and we hope this will encourage drivers to slow down. It is our hope and expectation that all Glen residents adhere to the speed limit – it is safer for all of us, allows people time to pull out of their driveways along the street – and it hopefully discourages speeders from using the Glen! The freeway is for them!

## Annual Quito Lane Strawberry Brunch!

A tradition for over 20 years, the residents of Quito Lane joined together on Father's Day this year for their annual Quito Lane brunch. Resident Jane Curry started the gathering in 1993 and it's been a time-honored tradition since. Neighbors enjoyed a potluck feast complete with homemade bread, salads, and lemonade...and strawberry shortcake for dessert. This gathering has been instrumental in forging life-long friendships on the Lane, and has allowed neighbors time to socialize and talk about issues we face in the Glen. We all feel a little safer knowing we're looking out for one another!



## *In the Kitchen with Diane*

by Diane LaFleur

### Quick & Easy Texas Style Beans

Makes one large pot serving 12-20 people.

This recipe was passed down to my childhood friend Barbara from her father, Tom who was raised in Texas. I remember these beans at her house and how wonderful they were with sautéed collard greens with vinegar and BBQ'd ribs.

- 3 med. sweet yellow onions chopped fine
- 1 lb of good quality bacon (optional if made for vegetarians ((there are vegan bacon bits available. Editor)) chopped fine
- 2-3 cans kidney beans 15 oz or 25 oz
- 2-3 cans pinto beans 15 oz Or 25 oz

Sauté the onions with 1 Tablespoon brown sugar until golden and set aside. Brown the chopped bacon until golden.

Mix together with the beans in a large cooking pot and add a few drops of Tabasco Hot sauce, 1-2 Tablespoon Worcestershire sauce and 1-teaspoon garlic powder. If you like the taste of molasses you could add 1 Tablespoon. Adjust the seasoning to taste.

Simmer for about 1 1/2 hours for the flavors to blend and enhance.

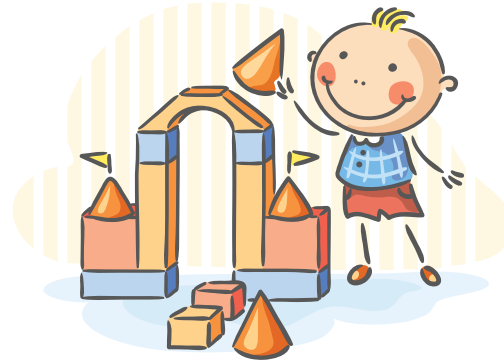


**PLAYGROUP NOW HAS A DIRECTOR OF EDUCATION**

Longtime teacher Shadi Bahktiari will fill the new position of Director of Education, Beverly Glen Playgroup recently announced. With a degree in Bachelor of Arts in Child Development from California State University, Northridge, Shadi has over 20 years of experience working with children and families. At the Playgroup, Shadi has held almost every position including teacher, director and even parent of two children who graduated from the school. In 2015, Shadi began leading the curriculum designed for the Parent & Me program.

While continuing to teach, Shadi's new role will enable her to wholly employ her passion for guiding families through the parenting challenges of early childhood. Shadi commented, "I love coming to work each day to amazing teachers, wonderful kids and a community of families. When I help a child or parent overcome a particular challenge, it is the most rewarding job."

Zeke Rippey, Playgroup's Director, said "Having known and worked closely with Shadi for a number of years, I know what a wonderful and kind educator she has always been to children and parents. I'm thrilled Playgroup will have her as our Director of Education."



**Beverly Glen Playgroup**

*A Cooperative Preschool*

Founded in 1946, Beverly Glen Playgroup is a parent-participation, cooperative, not-for-profit preschool on Scenario Lane that endorses a play-based, developmental philosophy. The "Playgroup" approach respects individual rates of development. Children learn through hands-on play that incorporates art, music, literature, science, mathematics, movement and dramatic play. Small class sizes, low teacher-student ratios, a cozy setting and a vibrant, close-knit community of educators and families provide children with an intimate, safe environment to develop early skills with confidence.

**Preschool for ages 2 to 5:** The morning program is for older children (3 by Sept. 1). The afternoon program is for younger children (2 by Sept. 1).

**Parent & Me for ages 6 months to 2 years:** Playgroup's new weekly play and parenting class meets on Thursdays at 3:15.

**2016 FALL TOUR SCHEDULE :**

September 22nd, October 20th, November 17th, December 8th

Tours begin promptly at 9:45 a.m. Parents only, no children

Register to tour at [beverlyglenplaygroup.org](http://beverlyglenplaygroup.org) or call 310.470.0992.

10409 Scenario Lane, Los Angeles, CA 90077 [beverlyglenplaygroup.org](http://beverlyglenplaygroup.org)

**Are you a PLAYGROUP alum?**

We want to hear all your news! Please send photos and updates to be included in the next Playgroup Alumni Newsletter. Send current email address to: [Alumni@beverlyglenplaygroup.org](mailto:Alumni@beverlyglenplaygroup.org). Look for all the latest Playgroup alumni news and event postings at [beverlyglenplaygroup.org](http://beverlyglenplaygroup.org).

**FOR SALE**

10431 Scenario Lane  
Bel Air, 90077  
List Price \$1,249,000



**FOR SALE**

1312 N Beverly Glen Blvd  
Bel Air, 90077  
List Price \$979,000



**FOR SALE**

10207 Seabury Lane  
Bel Air, 90077  
List Price \$1,385,000



**STEVEN FOONBERG**

Broker/Realtor®  
BRE#01232587



[Steven@Foonberg.com](mailto:Steven@Foonberg.com)  
[www.WestsideRealtyGroup.com](http://www.WestsideRealtyGroup.com)



**WESTSIDE**

REALTY GROUP INC

EST 1911



1615 N. Beverly Glen Blvd, Bel Air, CA 90077 ~ Office (310) 474 - 1013 ~ Fax (310) 470 - 2495  
[www.WestsideRealtyGroup.com](http://www.WestsideRealtyGroup.com) - [Steven@Foonberg.com](mailto:Steven@Foonberg.com) - [www.BeverlyGlenRealty.com](http://www.BeverlyGlenRealty.com)

**Glen Market**

Fine Wine, Liquor & Groceries

1603 N Beverly Glen Blvd.  
Los Angeles, CA  
90077

Phone: 310-474-1272  
Fax: 310-474-1227

**Delivery Available**



**Beverly Glen  
CLEANERS & LAUNDRY**

*EXPERT ALTERATIONS  
SAME DAY SERVICE*

**(310) 475-2212**

1619 N. Beverly Glen Blvd.  
Los Angeles, CA 90077



Give a little time to the Residents Association to keep your community as safe and friendly as it is.

Participate in a committee, attend the monthly board meetings. Just a few hours a month will go a long way towards keeping the Glen special. Plus you get to interact with other fabulous Glenites, who care about our beautiful community. Email Gillian, vp@beverlyglen.org with questions or to offer your participation.



**BRUSH  
CLEARANCE**



SPRINKLER REPAIR & INSTALLATION  
NEW LAWNS • HEDGE WORK • TREE SERVICE  
MOWING & EDGING  
DRIVEWAY WASHING & CONSTRUCTION

Residential & Commercial • Call for Free Estimate  
*Glen References Available!*

JAVIER OLMOS  
(818) 652-3114

OBERTO OLMOS  
(818) 893-6766



**WESTSIDE**

REALTY GROUP INC.

EST 1911

*Beverly  
Glen*  
REALTY

**STEVEN FOONBERG**

Broker / Realtor®

O 310.474.1013  
F 310.388.5889  
Steven@Foonberg.com  
www.WestsideRealtyGroup.com  
CalBRE #01232587

1615 North Beverly Glen Boulevard  
Bel Air, California 90077

**BEVERLY GLEN  
REALTY**

*A Tradition in the Glen Since 1911*

**SHARALEE FLESCHE**

Broker

1615 North Beverly Glen Boulevard | Los Angeles, California 90077  
Telephone 310.474.1013 x303 | Cellular 310.967.9025 | Fax 310.470.2495  
sharaleef@gmail.com | DRE #01862702 | www.sharaleeflesche.com



Flavorful vegan  
Bouillon Cubes  
Vegetable and Low  
Sodium



Soy Free  
Used in Dips,  
Spreads, Dressings,  
Gravy, Soup -  
Delicious and very  
healthy!



Available at Whole  
Foods or online  
[www.Organic-Gourmet.com](http://www.Organic-Gourmet.com)  
Delivery available for  
min. \$ 25 order

**LAWRENCE J. IMEL, ESQ.**

BUSINESS AND PROBATE LITIGATOR

LURIE, ZEPEDA SCHMALZ & HOGAN, APC

9107 WILSHIRE BOULEVARD, SUITE 800  
BEVERLY HILLS, CALIFORNIA 90210-5533  
TELEPHONE: (310) 274-8700  
LIMEL@LURIE-ZEPEDA.COM

WWW.LURIE-ZEPEDA.COM

2016 Membership – Be sure renew your membership!

Together we are stronger

- \_\_\_\_\_ Single Membership \$30 a year
- \_\_\_\_\_ Family Membership \$40 a year
- \_\_\_\_\_ Silver Sycamore - \$ 50 donation
- \_\_\_\_\_ Golden Oak - \$ 100 donation

Please make checks payable to “Residents of Beverly Glen, Inc.” and send with this form to 10409 Scenario Lane, Los Angeles, CA 90077, or pay online at [www.BeverlyGlen.org](http://www.BeverlyGlen.org).



Name \_\_\_\_\_

Address \_\_\_\_\_

\_\_\_\_\_

Phone \_\_\_\_\_

Email \_\_\_\_\_

[www.beverlyglen.org](http://www.beverlyglen.org)



Residents of Beverly Glen, Inc.  
Les River Community Center  
10409 Scenario Lane  
Los Angeles, CA 90077  
[www.beverlyglen.org](http://www.beverlyglen.org)