

Spring 2017



# The Glenite

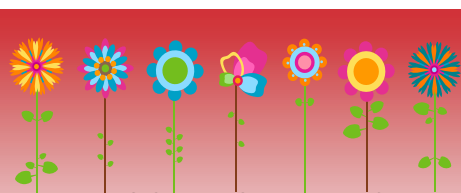
News and Noteworthy Goings-on in the Glen

## In This Issue

Holiday Party Recap.....	1
Message from the NEW President	2
Harvard-Westlake Building .....	3
News and Notices .....	4-6
In the Kitchen with Diane .....	6
At Your Service .....	7
Membership Application.....	8



Cookie decorating  
crafts coordinated by  
Daina Danovitch



### UPCOMING EVENTS

Garden Walk: 4/23/2017

Annual Beverly Glen Fair: 6/4/2017

Annual Meeting: 10/15/2017

Holiday Party: 12/3/2017

[www.beverlyglen.org](http://www.beverlyglen.org)

## ROBG Holiday Party

By Elke Heitmeyer & Kira Palmer

The Annual Glen Holiday Party at the Les Rivers Community Center in December 2016 was another great one! The food that residents and businesses donated was a smorgasbord of deliciousness. The party wouldn't be the hit that it is without the help from community members who take the time to contribute to and attend this popular event. A special Thank You to Beverly Glen Deli and the Glen Market for their generous donations of food and drink. Readers, please

thank them in person next time you visit them. The wine tasting table hosted by Steven Foonberg, Beverly Glen Realty, and generously poured by Sharalee Flesche and Michelle Vannoy was once again a huge attraction and is always looked forward to by many. Throughout the years Beverly Glen Realty has been the most ardent supporter of our community efforts and we so appreciate them! A very very special thank you to Jadon Friedberg for all of his hard work providing the sound equipment and his technical savvy for upbeat tunes for this festive event.

Photos: Kira Palmer

The children had lots of fun playing in the yard and there were cookie decorating crafts coordinated by Daina Danovitch. We also appreciate everyone that came early and stayed late for the set-up and clean up. It takes a lot of work to put on any event big or small, but together it can get done with ease and fun.



Dan Palmer, Councilman Paul Koretz  
& Diana Walstrom



Ray Buktenicas wearing his  
festive sweater!



Chuck Buell, Stephen Benson & Robert Ringler

The community participation in Beverly Glen is really fabulous. I encourage you to speak to a ROBG board member about becoming involved at some level that works for you. The Garden Walk on April 23rd would be a great opportunity.



Tamar Cooper & Barbara Rapoport enjoying conversation



Sharalee Flesche, Michele  
Vannoy & Fadia De Falco  
pouring at The Westside Reality  
Group wine table



Hildreth Simmons sharing  
her famous Eggnog

## Message from the President

Dear Glen Neighbors!

I am honored to take the reins as President from the dedicated and very talented Tensie Palmer. While I have known many of you now for some time, some of you may not know me. I have served on the ROBG Board of Directors alongside Tensie since 2009. I have lived in Los Angeles and in the Glen since 2006, and my children attended school at Beverly Glen Playgroup. My family and I feel so fortunate to live in this semi-rural hillside oasis, surrounded by the magnificent urban areas of Los Angeles. How fortunate are we to co-exist with wildlife, amongst the oak and sycamore trees, and to be able to see stars at night. That said, canyon life has its challenges—traffic, irresponsible development, and preparing for emergencies, to name only a few. I am up for the challenge and over the year ahead I look forward to meeting you at our meetings and our various social gatherings.

Best wishes,

*Gillian Calof*

**Do you love and know our Glen Canyon, its history and its people?  
Or at least some of it and them? Do you enjoy writing?**

Submit your story, anecdote, historical tidbit or biographical sketch today! Send to [Glenite@beverlyglen.org](mailto:Glenite@beverlyglen.org).

## Friends of The Glen

SERVING THE GLEN  
SINCE 1946

BEVERLY GLEN



PLAYGROUP

## *The Glenite*

Founded 1953

Published by The Residents of Beverly Glen, Inc.  
10409 Scenario Lane • Los Angeles, CA 90077

[www.beverlyglen.org](http://www.beverlyglen.org)

ROBG Board of Directors Roster and Contact Info:

President	Gillian Calof <a href="mailto:president@beverlyglen.org">president@beverlyglen.org</a>
Vice President	Vacant <a href="mailto:vp@beverlyglen.org">vp@beverlyglen.org</a>
Treasurer	Karen Simonson <a href="mailto:treasurer@beverlyglen.org">treasurer@beverlyglen.org</a>
Secretary	Vacant <a href="mailto:secretary@beverlyglen.org">secretary@beverlyglen.org</a>
Emergency Preparedness	Dan Palmer <a href="mailto:emergency@beverlyglen.org">emergency@beverlyglen.org</a>
Hillside Federation Rep	Stephen Benson <a href="mailto:hillside@beverlyglen.org">hillside@beverlyglen.org</a>
Neighborhood Council	Robert Ringler, Dan Palmer <a href="mailto:babcnc@beverlyglen.org">babcnc@beverlyglen.org</a>
LDRCC Representative	Janine Gershon <a href="mailto:ldrcc@beverlyglen.org">ldrcc@beverlyglen.org</a>
Membership	Bob and Elaine Grunauer <a href="mailto:membership@beverlyglen.org">membership@beverlyglen.org</a>
Playgroup Representative	Daina Danovitch <a href="mailto:playgroup@beverlyglen.org">playgroup@beverlyglen.org</a>
Social	Renee Ordeneaux <a href="mailto:social@beverlyglen.org">social@beverlyglen.org</a>
Traffic	Vacant <a href="mailto:traffic@beverlyglen.org">traffic@beverlyglen.org</a>
Website	Jeff Schroeder <a href="mailto:website@beverlyglen.org">website@beverlyglen.org</a>
Board Members-at-Large	Tensie Palmer Hildreth Simmons
Zoning & Development	Vacant <a href="mailto:hillside@beverlyglen.org">hillside@beverlyglen.org</a>

### The Glenite

Editor: Kira Palmer  
[glenite@beverlyglen.org](mailto:glenite@beverlyglen.org)

Design by Bacall:Creative [www.bacallcreative.com](http://www.bacallcreative.com)

Please submit articles and notices to:

[glenite@beverlyglen.org](mailto:glenite@beverlyglen.org) (electronic versions only please!)

Glenite Summer 2017 deadline:

**Submissions needed by April 30, 2017**

## Massive Development Planned for Coldwater Canyon

The Harvard-Westlake School (private school in Studio City) has proposed a massive development on the Westside of Coldwater Canyon, in the hills south of Ventura Blvd. in Studio City. There are so many serious issues with this project including (but not limited to) environmental devastation, gridlock traffic during (and after according to a traffic engineer) and safety after garage & bridge are built.

This project would carve out 135,000 cubic yards of hillside and destroy over 150 protected oak and walnut trees to build a 200,000 sq. ft., 3 story private parking garage with a 90' retaining wall (will be the largest of its kind in Los Angeles), a lighted football size field on top, and a private pedestrian bridge over Coldwater Canyon, which is a designated scenic highway.

- Two-thirds of the proposed site is on protected open space land;
- Destroying over 150 trees, (most protected Oak & Walnut) and a large natural habitat;
- Retaining walls the size of the 405 Sepulveda pass;
- Construction will take over 3 years;
- 160 truck trips a day, 6 days a

week, creating gridlock on all main arteries from the valley to the city.

### School already has 30% more parking than mandated by the City.

The property is not zoned for their plans so they are requesting many variances from the city, and with deep pockets and influential alumni we need massive support to stop this devastating project. We do not support the urbanization of this open space land - land which has been designated for conservation. The proposed project is grossly out of character with the natural hillside environment, and not consistent with the site's current zoning and land use. If approved, it would set a terrible precedent for any development not only within the Santa Monica Mountains, but in all residential communities. The Santa Monica Mountains Conservancy, the Hillside Federation, the Sierra Club, CLAW (Citizens for LA Wildlife) the Studio City Residents Association, and the Sherman Oaks Homeowners Association have all recognized the significant adverse biological and visual impact this project would have.

### This petition will be delivered to:

- Councilmember Paul Krekorian
- Mayor Eric Garcetti

- Director of Planning, LA City Planning Department
- Director of Planning, LA City Planning Dept Vince Bertoni

Help send the message to the school to confine their development to the East side of Coldwater on their existing footprint - maintaining the integrity of the Open Space and single-family, residentially-zoned land on the West side of Coldwater Canyon. Please join Santa Monica Mountains Conservancy, CLAW (Center for LA Wildlife), Studio City, Beverly Glen, Laurel Canyon and Sherman Oaks HOA's, Hillside Federation, Sierra Club of LA, and sign the petition. <https://swwww.change.org/u/291083305>

Or follow the links on [www.savecoldwatercanyon.com](http://www.savecoldwatercanyon.com) to sign the petition, and visit site for more information and to review Safety, Air Quality, Traffic reports.

You can also TEXT, **PETITION** to **41411**

Thank you in advance for your support!

*Article provided by Save Coldwater Canyon! Inc*

FRIENDS OF THE GLEN

## GLEN MARKET

*Large Selection of Fine Wines & Spirits Available*



1603 N. Beverly Glen Blvd. • Bel Air, CA 90077  
Delivery Available • 310-474-1272

## Delivery Available

### Specials

Johnnie Walker Blue Label  
Caymus Cabernet Sauvignon  
Silver Oak Alexander Valley  
Cabernet

### Cabernets

Opus One  
Far Niente  
Duckhorn  
Robert Mondavi Reserve

### Chardonnays

Far Niente  
Cakebread Cellars  
Chateau Montelena

### Reds

The Prisoner  
Abstract

### Champagnes

Dom Perignon  
Veuve Cliquot

### Malt Whiskeys

Macallan  
The Glenrothes

**We also have bourbons,  
gins and much more . . .**



## Your ROBG Committee Members

### GILLIAN CALOF - President

[president@beverlyglen.org](mailto:president@beverlyglen.org)

Gillian has lived in the Glen since 2006 and her husband Grant has lived in the community since 1994. She is the Operations Director for an environmental nonprofit organization called Climate Action Reserve and has a Masters degree in Nonprofit Administration. She is also a member of the Beverly Glen Playgroup board where her children attend school, and previously served ROBG as the Hillside Federation representative. Gillian is deeply committed to the safety and well-being of this community as well as preserving its natural beauty and character.

### VACANT - Vice President

[vp@beverlyglen.org](mailto:vp@beverlyglen.org)

### VACANT - Secretary

[secretary@beverlyglen.org](mailto:secretary@beverlyglen.org)

### KAREN J. SIMONSON - Treasurer

[treasurer@beverlyglen.org](mailto:treasurer@beverlyglen.org)

Karen Simonson, ROBG treasurer since 2010, has lived in the Glen for 30 years, in an award-winning home designed by her husband, Barton Phelps, FAIA. Their daughter, Charlotte, is an alumna of Playgroup and is now a law student in NYC. Karen is an estate planning attorney in Claremont, but will make house calls for her Westside clients. She enjoys travel, reading, and volunteering with Planned Parenthood. Keep those dues payments coming to support the Glenite, ROBG events, and the all-important emergency preparedness equipment needed in the Glen community!

### ROBERT RINGLER - Bel Air Beverly Crest Neighborhood Council

[babnc@beverlyglen.org](mailto:babnc@beverlyglen.org)

### DAINA DANOVTCH - Beverly Glen Playgroup Liason

[playgroup@beverlyglen.org](mailto:playgroup@beverlyglen.org)

Daina has lived in Beverly Glen since 2008. She is a family physician and geriatrician at UCLA, as well as a mother of three children who have attended Beverly Glen Playgroup. Her favorite things about the Glen are the beautiful trees, the easy access to hiking, and being part of the warm community of families that meet while their children are part of Playgroup, but remain friends for years to come.

### DAN PALMER - Emergency Preparedness

[emergency@beverlyglen.org](mailto:emergency@beverlyglen.org)

### KIRA PALMER - GLENITE

[glenite@beverlyglen.org](mailto:glenite@beverlyglen.org)

Kira Palmer's family has had property in the Glen since 1901 and feels strongly connected to the area. Although she attended high school in Illinois, she loves California and came back to the Glen as soon as she graduated High School. She attended FIDM and CSUN majoring in Business marketing and currently works in marketing for a cosmetic company. She enjoys riding her scooter through the canyons, camping, and spending time with her hubby (Stephen Benson) and their two rescue pups.

### STEPHEN BENSON - Hillside Federation Representative

[hillside@beverlyglen.org](mailto:hillside@beverlyglen.org)

### Zoning and Development Committee

[zoning@beverlyglen.org](mailto:zoning@beverlyglen.org)

Stephen Benson is the Residents of Beverly Glen Hillside Federation Representative. He moved to the Glen in 2010 and started community activism and service as a member of the board in 2013. He graduated from Cal State University, Northridge in 2015 majoring in Business. He looks forward to hearing from the community about what is happening in the Glen.

Drive Safely, Enjoy the Glen... SLOWLY Please.

### JANINE GERSHON

### Les and Dorothy River Community Center Representative

[ldrcc@beverlyglen.org](mailto:ldrcc@beverlyglen.org)

Janine has lived in the Glen since 1994, when she joined her husband who had lived there for a number of years prior. She has 3 children, all of whom were born and raised in the Glen and attended Beverly Glen Playgroup. She also has an older stepdaughter who was raised in the neighborhood, as well. Janine is active on the Les and Dorothy River Community Center Board of Directors, and, as such, is the liaison between the LDRCC group and the Residents of Beverly Glen. After graduating from Stanford University with a degree in economics, Janine became controller of three large real estate development/property

management companies. Ultimately, since she got her California real estate salesperson license at the age of 18, she segued into the family business, real estate. Currently, Janine is a Previews Property Specialist with Coldwell Banker Residential Brokerage, and works in the city areas from Downtown Los Angeles to Malibu and in the valley areas from North Hollywood to Calabasas. Having been born at UCLA and having grown up in Los Angeles, Janine is intimately familiar with the areas that she covers. She represents both buyers and sellers in the purchase and sale of homes, condominiums, residential income property, and vacant land, as well as tenants and landlords in lease transactions. Janine loves the Glen family and enjoys the many activities planned by local residents.

### BOB & ELAINE GRUNAUER

### Membership Committee

[membership@beverlyglen.org](mailto:membership@beverlyglen.org)

### RENEE ORDENEUX

### Social Events Chair

[social@beverlyglen.org](mailto:social@beverlyglen.org)

### JEFF SCHROEDER

### Website Communications

[website@beverlyglen.org](mailto:website@beverlyglen.org)

### VACANT

### Traffic Committee

[traffic@beverlyglen.org](mailto:traffic@beverlyglen.org)

### TENSIE PALMER

### Board Member at Large

Tensie has been a Glenite since 1996 and has served with the ROBG Board since 2005. Being Dan Palmer's wife, Mom of 5 daughters and Grandma to 9 keeps her busy & happy. She loves God, loves people and works full time. The Glen is a great place to "Bloom where you are planted."

### HILDRETH SIMMONS

### Board Member at Large

## "PAWS" Sybil Passed away

by D. Fisher

Earlier this year, we lost an "honorary" member of the Glen, Sybil Scotford (Paws).

For 30 years, she took great loving care of many of our pets while we were away and considered the Glen her second home. Our pets instinctively took to her. One of my kitties was very shy and would hide under the bed for hours when someone new came into the house. I was so worried about leaving him, but on Sybil's first visit, pal Joey came out to meet her within 10 minutes. Sybil had a magic touch with our little loved ones. She will be missed by many a cat, dog, bird and human.



## Coyotes love Cats

SPCA and concerned neighbor Lee Reehm advise all Glen residents to keep their cats indoors, as the coyotes, owls and bobcats could augment their diet with your beloved pet. In addition, millions of birds, many already otherwise endangered, are killed each year by free roaming cats.

## Read and Share!

by Marc Olevin

Hello Glen Neighbors. We'd like to share another free community experience with you.

Beverly and I are delighted to announce that we have become stewards of a Little Free Library right here at 2252 Beverly Glen Place, (in front of our house). You may know them as Tiny Libraries or the Itty Bitty Book Exchanges, where you can take a book, leave a book, or both. They are plentiful in communities throughout Seattle, and during our stay there this past summer we enjoyed browsing and exchanging books, and decided it would be perfect for The Glen.

This is designed to be for adults and YA (young adult) so please at this time no children's books ... there are plenty available at Playgroup for Glen kids.

The library is now ready for exchanging books. Come on by and help yourself: **you can take a book without leaving one...you can leave a book without taking one** ... it does not need to be an even exchange, it will all even out in the end. Since we're just starting, if you have an interesting book to "seed" our new library please share it.

NOTE: The Library will be covered up in bad weather, but otherwise we can't wait for you to share the book nook in the neighborhood.



Photo: Marc Olevin

## I WISH TO FLY

I wish to fly.

Fly over the mountains,

Fly over the fields,

Fly over all that the great  
earth yields.

Fly over the sea,

Fly over the land,

Reach the farthest place

Ever touched by man's hand.

And if I ever can fly,

That's where I'll go,

Flying all the way,

Through storms and rain  
and snow.

*Devis Danovitch, age 8, is a  
BGPG alum and now attends  
Warner Avenue Elementary.*



## In the Kitchen with Diane

by Diane LaFleur

### ROASTED CHICKEN WITH DRIED FRUIT

Served with couscous and roasted pine nuts

Serves 7-8 people

#### Ingredients:

- 4-5 lbs of chicken pieces, skin on (thighs and breasts)
- 8 cloves of garlic, peeled and diced
- 2 T dried oregano
- 1 cup dried fruit (apricots, prunes and yellow raisins)
- 1/8 cup brown sugar
- 1/4 cup olive oil
- 1 cup pitted green olives
- 1/2 cup capers
- 1/8 cup red wine vinegar
- 1 cup white wine
- Juice of two lemons
- Sea salt and pepper to taste
- 2 T chopped preserved lemon (optional)

Marinate the chicken in the above ingredients for 2 hours in the refrigerator. Place in large flat casserole cooking pan, single layer with marinade and bake for 50 min. at 350. Baste two or three times. Remove from oven, plate and serve hot with couscous on the side.

### Couscous with pine nuts and dried currants

#### Ingredients

- 4 tablespoons olive oil
- 3 shallots, diced
- 3 cups chicken stock and 1/2 cup water
- 1/8 teaspoon sea salt
- 2 1/4 cups couscous
- 1 cup toasted pine nuts
- 1/8 cup dried currants

Heat the olive oil in a large saucepan. Add the shallots and sauté over medium heat for 3 minutes. Add the chicken stock, water and salt; bring to a boil. Turn off the heat. Stir in the couscous, cover the pan, and let sit for 10 minutes. Add the roasted pine nuts and currants and fluff with a fork. Sprinkle finely chopped parsley on top.

Serve hot with the roasted chicken. Enjoy!

## SPRING 2017 TOURS BEVERLY GLEN PLAYGROUP

A Co-Operative Preschool for ages 2 - 5

January 19th

February 16th

March 16th

May 18th

Tours begin promptly at 9:45 a.m.

All prospective families must tour the school before applying. Children are not permitted to attend tours.

Register to tour at [beverlyglenplaygroup.org](http://beverlyglenplaygroup.org) or call 310.470.0992.

### PARENT & ME

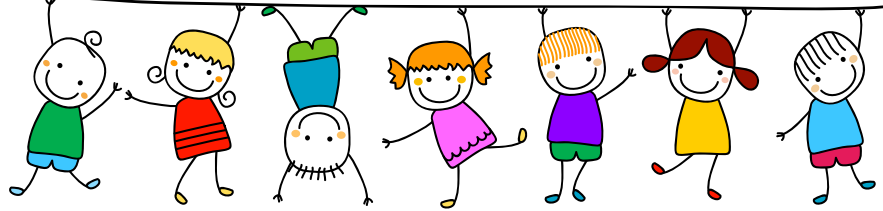
Families with children 12 months to two years can apply for the Parent & Me program which meets weekly. Find more information and applications at [beverlyglenplaygroup.org](http://beverlyglenplaygroup.org).

*Founded in 1946, Beverly Glen Playgroup is a parent-participation, cooperative, not-for-profit preschool that endorses a play-based, developmental approach to learning. Housed in a quiet cabin in Beverly Glen canyon, Playgroup recognizes the uniqueness of each child and respects individual rates of development. Beverly Glen Playgroup is a vibrant, close-knit community of families dedicated to preserving a safe, nurturing environment where educators and parents collaborate to create an enduring early learning experience for children.*

10409 Scenario Lane, Los Angeles, CA 90077  
(310) 470-0992 [beverlyglenplaygroup.org](http://beverlyglenplaygroup.org)

## Beverly Glen Playgroup

A Cooperative Preschool



Playgroup now offers a weekly **Parent & Me** program on Thursday afternoons from 3:15-4:30PM, lead by long-time teacher, Shadi Bakhtiari. For more information go to <http://www.beverlyglenplaygroup.org/learn/parent-me/>

Playgroup's annual yard sale will take place on Saturday, May 6th, from 8AM-2PM. If you would like to donate items to the sale, you're welcome to stop by Playgroup on Thursday, May 4th, from 5-9PM, or Friday, May 5th, from 9AM-12PM. Please only drop off items on the two dates and during the specific time periods. Thank you!

In celebration of Valentine's Day, the Playgroup kids were asked what love means to them. Here are a few of their thoughts:

"Love means your heart is happy."

-Eamonn

"Love means to hug and to kiss and give somebody a frozen yogurt."

-Ryan

"Love means friendship."

-Charlotte

"Love means to hug somebody. I love my mom."

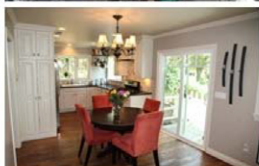
-Aidan

"Love is for someone and it's for you too. Love makes you love you. Love makes you a good person. You can show your love to spread your love."

-Allen

### SOLD

10431 Scenario Lane  
Bel Air, 90077  
List Price \$1,249,000



### SOLD

1312 N Beverly Glen Blvd  
Bel Air, 90077  
List Price \$979,000



### SOLD

10207 Seabury Lane  
Bel Air, 90077  
List Price \$1,385,000



## STEVEN FOONBERG

Broker/Realtor®  
BRE#01232587



Steven@Foonberg.com  
[www.WestsideRealtyGroup.com](http://www.WestsideRealtyGroup.com)



## WESTSIDE

REALTY GROUP INC

EST 1911

*Beverly Glen*  
REALTY

1615 N. Beverly Glen Blvd, Bel Air, CA 90077 ~ Office (310) 474 - 1013 ~ Fax (310) 470 - 2495  
[www.WestsideRealtyGroup.com](http://www.WestsideRealtyGroup.com) - [Steven@Foonberg.com](mailto:Steven@Foonberg.com) - [www.BeverlyGlenRealty.com](http://www.BeverlyGlenRealty.com)



## Glen Market

Fine Wine, Liquor & Groceries

1603 N Beverly Glen Blvd.  
Los Angeles, CA  
90077

Phone: 310-474-1272  
Fax: 310-474-1227

**Delivery Available**



## Beverly Glen CLEANERS & LAUNDRY

EXPERT ALTERATIONS  
SAME DAY SERVICE

**(310) 475-2212**

1619 N. Beverly Glen Blvd.  
Los Angeles, CA 90077

**Loving, Meticulous Care  
for your home and pets while you're away.**

**310-890-3961**

References available  
on request



**BRUSH  
CLEARANCE**



SPRINKLER REPAIR & INSTALLATION  
NEW LAWNS • HEDGE WORK • TREE SERVICE  
MOWING & EDGING  
DRIVEWAY WASHING & CONSTRUCTION

Residential & Commercial • Call for Free Estimate  
*Glen References Available!*

JAVIER OLMOS  
(818) 652-3114

OBERTO OLMOS  
(818) 893-6766



**WESTSIDE**

REALTY GROUP INC

EST 1911

*Beverly  
Glen*  
REALTY

**STEVEN FOONBERG**  
Broker / Realtor®

O 310.474.1013  
F 310.388.5889  
Steven@Foonberg.com  
www.WestsideRealtyGroup.com  
CalBRE #01232587

1615 North Beverly Glen Boulevard  
Bel Air, California 90077

**BEVERLY GLEN  
REALTY**

*A Tradition in the Glen Since 1911*

**SHARALEE FLESCHE**  
Broker

1615 North Beverly Glen Boulevard | Los Angeles, California 90077  
Telephone 310.474.1013 x303 | Cellular 310.967.9025 | Fax 310.470.2495  
sharaleef@gmail.com | DRE #01862702 | www.sharaleeflesche.com



Flavorful vegan  
Bouillon Cubes  
Vegetable and Low  
Sodium



Soy Free  
Used in Dips,  
Spreads, Dressings,  
Gravy, Soup -  
Delicious and very  
healthy!



Available at Whole  
Foods or online  
[www.Organic-Gourmet.com](http://www.Organic-Gourmet.com)  
Delivery available for  
min. \$ 25 order

**LAWRENCE J. IMEL, ESQ.**  
BUSINESS AND PROBATE LITIGATOR

LURIE, ZEPEDA SCHMALZ & HOGAN, APC

9107 WILSHIRE BOULEVARD, SUITE 800  
BEVERLY HILLS, CALIFORNIA 90210-5533  
TELEPHONE: (310) 274-8700  
LIMEL@LURIE-ZEPEDA.COM

WWW.LURIE-ZEPEDA.COM

2017 Membership – Be sure renew your membership!

Together we are stronger

\_\_\_\_\_ Single Membership - \$30 a year

\_\_\_\_\_ Family Membership - \$40 a year

\_\_\_\_\_ Silver Sycamore - \$ 50 donation

\_\_\_\_\_ Golden Oak - \$ 100 donation

Please make checks payable to “Residents of Beverly Glen, Inc.”  
and send with this form to 10409 Scenario Lane, Los Angeles, CA 90077,  
or pay online at [www.BeverlyGlen.org](http://www.BeverlyGlen.org).



Name \_\_\_\_\_

Address \_\_\_\_\_

\_\_\_\_\_

Phone \_\_\_\_\_

Email \_\_\_\_\_

[www.beverlyglen.org](http://www.beverlyglen.org)



[www.beverlyglen.org](http://www.beverlyglen.org)  
Los Angeles, CA 90077  
10409 Scenario Lane  
Les River Community Center  
Residents of Beverly Glen, Inc.