

In This Issue

Annual Garden Walk Recap	1
Message from the President.....	2
A Preschool in Your 'Hood	4
News and Notices	5
In the Kitchen with Diane	6
At Your Service	7
Membership Application.....	8

Glen Fair!



The Annual Highlight of Glen Life
Sunday June 3rd Noon – 5 pm
Beverly Glen Place

- Live Entertainment
- Unique Arts and Crafts
- Local Artists' Show
- Yummy Foods and Desserts
- BBQ • Chili • Wine Tasting
- Lots of Kids Games
- Great Fun for All

All Beverly Glen residents are invited to attend the Board Meetings held the 2nd Monday of each month, from 7:30 – 9:00 pm at the LDRCC. Come join in the discussion and let us hear your views and concerns.

www.beverlyglen.org

Annual Glen Garden Walk

by Kira Palmer

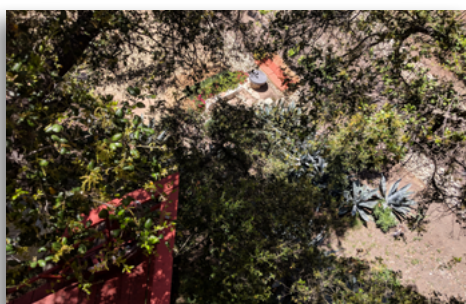
The Glen's Annual Garden walk took place Sunday April 22. Residents met at the LDRCC at 12:30 pm to enjoy some treats and refreshments and to receive their list of homes on this year's walk. There were five gardens on the walk this year with some of the Glen's loveliest gardens and creative landscaping, plus a bonus home-brewing demonstration.

This year the Arroyo House returned



Arroyo House Vineyard

with attractions everyone looks forward to such as the treehouse and delicious homemade cookies. The multilevel architecture is interesting and fun to explore. It was lovely to see how nice the vineyard is coming along and to observe inventive retaining wall ideas. There are multiple levels, multiple seating areas and stopping points including art pieces around this property. The owners of this



Photos: Kira Palmer



Arroyo House creek

property are hosting a honeybee colony with a safe location free of pesticides. Not only are they doing their part to help save the honeybees one colony at a time, they are also reaping the benefits of more abundant flowers. They even get to keep some of the honey too!

The Arnold residence was a new addition to the walk this year. This property is a great spot to marvel at excellent architecture with its modern style including solar

panels and ¼ inch steel plates used for retaining walls. The hillside is covered



Arnold residence solar panels

with tall native plants that have stabilizing root systems such as the Matilija Poppy.

Continued on page 3

Message from the President

Dear Glen Neighbors,

Spring is upon us and so begins a season of many ROBG events. After a one year break we had a spectacular Garden Walk on April 22. The Garden Walk is one of my favorite events of the year as generous Glenites showcase their beautiful yards and gardens and remind us of how special this canyon truly is. Many thanks go out to our residents who showcased gardens and to those of you who participated. Up next is the annual Glen Fair on Sunday, June 3, where we also hope to see you! These community events continue to be unique among neighborhoods in Los Angeles, especially in a time when Nextdoor and other online communities are springing up. While there is certainly room to co-exist, nothing can replace the spirit of getting together in person in our community. And to that end, our monthly ROBG board meetings are open to all residents and are a great way to get involved. If you are interested in zoning and development, traffic and other aspects of our community, we are looking for volunteers and have open board positions (see column to the right). Volunteering and serving on the board is a great way to give back and get to know your community members. We meet the second Monday of each month at 7:30 at LDRCC – we hope to see you there!

As always, drive slowly and yield to your neighbors.

Best wishes, *Gillian Calof*

**Do you love and know our Glen Canyon, its history and its people?
Or at least some of it and them? Do you enjoy writing?**

Submit your story, anecdote, historical tidbit or biographical sketch today! Send to Glenite@beverlyglen.org.

Friends of The Glen



The Glenite

Founded 1953

Published by The Residents of Beverly Glen, Inc.
10409 Scenario Lane • Los Angeles, CA 90077

www.beverlyglen.org

ROBG Board of Directors Roster and Contact Info:

President	Gillian Calof president@beverlyglen.org
Vice President	Vacant vp@beverlyglen.org
Treasurer	Karen Simonson treasurer@beverlyglen.org
Secretary	Tensie Palmer secretary@beverlyglen.org
Emergency Preparedness	Dan Palmer emergency@beverlyglen.org
Hillside Federation Rep	Stephen Benson hillside@beverlyglen.org
Neighborhood Council	Robert Ringler, Dan Palmer babcnc@beverlyglen.org
LDRCC Representative	Janine Gershon ldrcc@beverlyglen.org
Membership	Bob and Elaine Grunauer membership@beverlyglen.org
Playgroup Representative	Norman Chan playgroup@beverlyglen.org
Social	Renee Ordeneaux social@beverlyglen.org
Traffic	Vacant traffic@beverlyglen.org
Website	Jeff Schroeder website@beverlyglen.org
Board Members-at-Large	Tensie Palmer Hildreth Simmons
Zoning & Development	Vacant hillside@beverlyglen.org

The Glenite

Editor: Kira Palmer
glenite@beverlyglen.org

Design: Patricia Bacall www.bacallcreative.com

Please submit articles and notices to:
glenite@beverlyglen.org (electronic versions only please!)

Glenite Fall 2018 deadline

Submissions needed by October 5, 2018

Annual Garden Walk

Continued from p.1

Another looked-forward to garden is the Krasne Residence. Frank and Sally always provide a beautiful spread of cheese, crackers, other yummy snacks, wine and drinks. Its lovely to hear that the Danovitch kids still enjoy helping tend to this hillside garden. After the bad rains we had last year did a number on the vegetable garden, it is coming back to life with new and improved strategies!

The Znidaric & Fernandez house was another great little stop on this tour. The wine and cheese pairings were delicious, and the creative use of the steep lot was inspiring. Many native flowers and succulents were spotted here along with some repurposed materials and creative planters for vegetables and such.

Last on the list of gardens was the sprawling hillside of the May residence. This stop can offer some challenging hillside climbing or you can choose to take an easier route. There are sitting areas in various locations, interesting art pieces and even a gong! There is so much vegetation here and many little sites to catch the eye.

A bonus on the walk this year was a stop at the Bourret and Ordeneaux residence. Here you were able to watch

local homebrewer Justin, brewing summer ale and even get to sample a few of the homebrews!

We hope you had a chance to come out to view some of the gardens on the list. No home is like the next in Beverly Glen. Walking through some of these gardens provided some real inspirations to participants. If you didn't make it this year please make it a point to attend next year, it is an experience you do not want to miss.

From top, clockwise: May House seating area, May House poppies & jade plants, Arroyo House seating area, May House 2nd seating area



FRIENDS OF THE GLEN

GLEN MARKET

Large Selection of Fine Wines & Spirits Available



1603 N. Beverly Glen Blvd. • Bel Air, CA 90077
Delivery Available • 310-474-1272

Delivery Available

Specials

Johnnie Walker Blue Label
Caymus Cabernet Sauvignon
Silver Oak Alexander Valley Cabernet

Cabernets

Opus One
Far Niente
Duckhorn
Robert Mondavi Reserve

Chardonnays

Far Niente
Cakebread Cellars
Chateau Montelena

Reds

The Prisoner
Abstract

Champagnes

Dom Perignon
Veuve Cliquot

Malt Whiskeys

Macallan
The Glenrothes

We also have bourbons, gins and much more . . .

A preschool right in your neighborhood— and it's been around for over 70 years!

Beverly Glen Playgroup was founded in 1946 by a group of Glen residents dedicated to preserving a safe, nurturing environment for their children. Over the course of the past 70 years, we've grown into a not-for-profit preschool for children aged two to five. But we remain a vibrant, close-knit community of families dedicated to fostering a sense of community and an enduring learning experience.



Housed in a quiet cabin in Beverly Glen canyon, Playgroup is a small cooperative preschool that practices a play-based, developmental approach to learning. We encourage fun and friendship while integrating learning into everyday activities.

With a full-time director and a professional staff of teachers, the focus at Playgroup is on helping children develop the versatility and resourcefulness they will need to succeed in kindergarten and beyond. Our approach recognizes the uniqueness of each child and respects individual rates of development. That



means fostering your child's innate curiosity, supporting their development of social skills, and introducing early academic skills in a meaningful way. Small class sizes, low teacher-student ratio, and a cozy setting provide children with an intimate, secure environment to develop these early skills with confidence.



This means lots of paint, lots of glitter, lots of sand, and an endless supply of love.

For information please call our Director, Shadi Bakhtiari at 310-470-0992 or email: director@beverlyglenplaygroup.org, or visit our website for further information: www.beverlyglenplaygroup.org

10409 Scenario Lane
Los Angeles, CA 90077
beverlyglenplaygroup.org

 **BEVERLY GLEN**
playgroup
a community preschool **EST. 1946**

VOLUNTEERING FOR YOUR COMMUNITY

By Gillian Calof, President

Volunteers have an enormous impact on the health and well-being of communities worldwide; the contributions of volunteers to our society are enormous, and critical functions could not be filled without them. Volunteers fight fires and assist in search and rescue; they help to keep our neighborhoods, streets, parks, rivers, green spaces, and water clean and safe; they tutor, teach, mentor, coach, and support young people; they help at animal shelters. The types of roles filled by volunteers are endless. Another way to look at the impact of volunteers is in statistics – in 2013 alone more than 62 million people volunteered over 8 billion hours. You get the picture.

Volunteers are also the backbone of the Residents of Beverly Glen. Each position is held by a volunteer who, along with this role, juggles home, family, work, and countless other responsibilities. Yet they make time for this important role for good reasons. Have you thought about becoming a volunteer in our community? Consider helping out by joining a committee of the Residents of Beverly Glen, or seeking a position on the board. Here are just a few reasons why you should:

Volunteers gain professional experience and personal growth. Volunteering helps you learn about the functions and operation of our government and gain knowledge of local resources available to solve community needs. It brings people together. As a volunteer you help unite and work with people from diverse backgrounds toward a common goal; you help build camaraderie and teamwork.

Volunteering strengthens your community and is a chance to give back. Community service is an investment in our Glen community and the people who live in it. If you use community resources or participate in Glen events, this is a great chance to give back.

It's good for you. Volunteering and giving back to your community can be incredibly rewarding, which can in turn reduce stress.

At the end of the day you make a difference!

Another way to visualize the impact and importance of volunteers in our community is this: Imagine if one day, all of our volunteers simply didn't show up. We'd be without a voice to the City, without a representative to

oversee traffic issues or matters affecting hillside communities; we wouldn't have a coordinator to oversee and plan all of our important community events like the annual Glen Fair and annual members' meeting; we wouldn't have an emergency preparedness committee to help prepare our community for a disaster; and, importantly, we wouldn't have an editor for this long-standing important community newsletter!

Feeling inspired? Contact Gillian Calof, President of Residents of Beverly Glen to learn more about current opportunities. Email: president@beverlyglen.org

CAL FIRE (@CAL_FIRE) TWEETED AT 10:00 AM ON SAT, MAR 10, 2018:

Do not top a tree to lower its height. Plan ahead! It is better to plant a smaller tree that will grow appropriately in its given space, or thin the tree by pruning. Consult with an arborist or certified tree expert. #HealthyTreesHealthyMe #CaArborWeek. <https://t.co/78eyTz0xiW> <https://t.co/ez1yWH6F97>

(https://twitter.com/CAL_FIRE/)

BRUSH CLEARANCE 2018

Every spring, we in the Glen face the L.A. Fire Department Brush Clearance deadline and inspections of our properties. Everyone should have received a card folder in the mail from LAFD. It explains everything that you need to complete before the beginning of the LAFD Brush Clearance Inspections. We must have our properties cleared of natural and landscape vegetation according to the LAFD requirement by April 30th, 2018. The safety of our homes can be significantly increased with proper brush clearance, advanced planning, and preparation. Brush clearance is a year-round responsibility. LAFD thanks you for your continued support and cooperation. For questions or concerns, please contact the Brush Clearance Unit via phone at (800) 994-4444 between the hours of 8:00 a.m and 11:00 a.m, email them at lafdbush@lacity.org or visit the LAFD website at www.lafd.org/brush. www.lafd.org/fire-prevention/brush/2018-owner-notification-mailer



In the Kitchen with Diane

by Diane LaFleur

TIRAMISU

(NO EGGS AND NO BAKING)

We recently had a birthday lunch served by our good friend, Tatiana, and she served this delicious tiramisu. She had used 3 egg yolks; I replaced that with whipped cream for this recipe.

Prep time: 30 minutes to put together and 6 hours in the refrigerator. Use a 13 x 9 baking dish.

Ingredients

- 1 1/2 cups brewed espresso or strong French roast coffee (room temp)
- 1 shot of cognac
- 3 8 oz containers of mascarpone cheese
- 4 tbs superfine sugar
- 1 1/2 cups heavy cream
- 24- 30 Italian ladyfingers (Forno Bonomi is the best, which can be found at Italian or Persian markets)
- Unsweetened cocoa powder or coarsely grated dark chocolate for decoration

Directions:

Mix the coffee and liqueur together in a bowl and set aside. Mix the mascarpone and sugar in a bowl until the sugar dissolves. Whip the cream in another bowl until it holds its shape, and fold it into the mascarpone mixture. Divide this into two bowls. Now the layering: Start with the ladyfingers. Dip and turn one ladyfinger at a time in the coffee mixture until just moistened, not soggy, and place it in the dish (lying flat). Repeat this until the whole bottom is covered with the ladyfingers (side by side, flat). After you have laid down your lady fingers cover them with half of the mascarpone mixture. Add another layer of ladyfingers (dipped in coffee). Layer the remaining mascarpone on the top of your second row of lady fingers, and smooth the surface. Cover the bowl with plastic wrap, and refrigerate for at least 6 hours. Just before serving sprinkle the top with either sifted cocoa powder or grated dark chocolate to taste.

Harvard Westlake Parking Structure Development

SURPRISE REPRIEVE—

In a letter received by Hillside/Save Coldwater Canyon, stating that the project on the west side of Coldwater Canyon was being halted, due to the overwhelming resistance from community and city recommendation. Since making that announcement about the Coldwater Canyon site, they have announced a plan to purchase and possibly develop at the Weddington Golf & Tennis facility on Whitsett Ave, in Studio City.

Stephen Benson
Hillside Representative

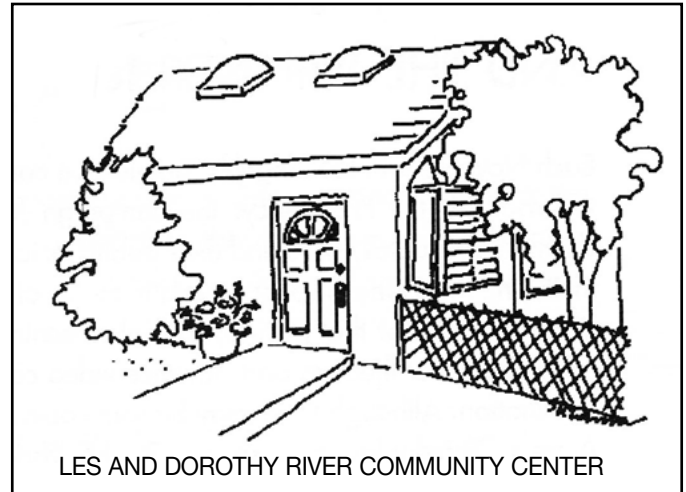
Be sure to support
the advertisers who
serve our community
and help bring you
The Glenite.



LES AND DOROTHY RIVER COMMUNITY CENTER—

It's Your Center

Available for rent \$50 evenings and weekends. It's a superb location at 10409 Scenario Lane — the perfect setting for adults or children's group activities, classes, discussion groups, meetings, birthday



LES AND DOROTHY RIVER COMMUNITY CENTER

parties, rehearsals, seminars, exercise sessions, etc. The Center can accommodate up to 40 people indoors, more outdoors with:

- Large, comfortable main room with stone hearth and fireplace
- Children's outdoor play apparatus, swings, wooden train, etc. in a spacious yard
- Outdoor patio area with shade trees
- Chairs (both adult and kiddie size)
- Some kitchen facilities (no stove)
- Parking on Beverly Glen Place or Blvd. only (no parking on Scenario Lane permitted)
- Discounts available for multiple use

To schedule the LDRCC for your event, contact ldrcc@beverlyglen.org.

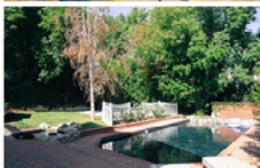
SOLD

1812 N Beverly Glen Blvd
Bel Air, 90077
List Price \$1,255,000



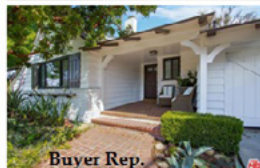
SOLD

16547 Greenleaf St
Encino, 91436
List Price \$1,455,000



SOLD

2108 Linda Flora Dr
Bel Air, 90077
List Price \$2,595,000



STEVEN FOONBERG

Broker/Realtor®
BRE#01232587



Steven@Foonberg.com
www.WestsideRealtyGroup.com



WESTSIDE

REALTY GROUP INC

EST 1911

Beverly Glen
REALTY

1615 N. Beverly Glen Blvd, Bel Air, CA 90077 ~ Office (310) 474 - 1013 ~ Fax (310) 470 - 2495
www.WestsideRealtyGroup.com - Steven@Foonberg.com - www.BeverlyGlenRealty.com

Glen Market

Fine Wine, Liquor & Groceries

1603 N Beverly Glen Blvd.
Los Angeles, CA
90077

Phone: 310-474-1272
Fax: 310-474-1227

Delivery Available



Beverly Glen CLEANERS & LAUNDRY

EXPERT ALTERATIONS
SAME DAY SERVICE

(310) 475-2212

1619 N. Beverly Glen Blvd.
Los Angeles, CA 90077



Give a little time to the Residents Association to keep your community as safe and friendly as it is.

Participate in a committee, attend the monthly board meetings. Just a few hours a month will go a long way towards keeping the Glen special. Plus you get to interact with other fabulous Glenites, who care about our beautiful community. Email Gillian, president@beverlyglen.org with questions or to offer your participation.



**BRUSH
CLEARANCE**



SPRINKLER REPAIR & INSTALLATION
NEW LAWNS • HEDGE WORK • TREE SERVICE
MOWING & EDGING
DRIVEWAY WASHING & CONSTRUCTION

Residential & Commercial • Call for Free Estimate
Glen References Available!

JAVIER OLMOS
(818) 652-3114

OBERTO OLMOS
(818) 893-6766



WESTSIDE

REALTY GROUP INC

EST 1911

*Beverly
Glen*
REALTY

STEVEN FOONBERG
Broker / Realtor®

O 310.474.1013
F 310.388.5889
Steven@Foonberg.com
www.WestsideRealtyGroup.com
CalBRE #01232587

1615 North Beverly Glen Boulevard
Bel Air, California 90077



WESTSIDE

REALTY GROUP INC

EST 1911

*Beverly
Glen*
REALTY

SHARALEE FLESCHÉ
Broker / Realtor®

O 310.474.1013 x303
F 310.470.2495
C 310.967.9025
Sharaleef@gmail.com
www.WestsideRealtyGroup.com
CalBRE #01862702

1615 North Beverly Glen Boulevard
Bel Air, California 90077



**Be sure to support the
advertisers who serve our
community and help bring
you The Glenite.**

LAWRENCE J. IMEL, ESQ.

BUSINESS AND PROBATE LITIGATOR

LURIE, ZEPEDA SCHMALZ & HOGAN, APC

9107 WILSHIRE BOULEVARD, SUITE 800
BEVERLY HILLS, CALIFORNIA 90210-5533
TELEPHONE: (310) 274-8700
LIMEL@LURIE-ZEPEDA.COM

WWW.LURIE-ZEPEDA.COM

2018 Membership – Be sure renew your membership!

Together we are stronger

_____ Single Membership - \$30 a year

_____ Family Membership - \$40 a year

_____ Silver Sycamore - \$ 50 donation

_____ Golden Oak - \$ 100 donation

Please make checks payable to “Residents of Beverly Glen, Inc.”
and send with this form to 10409 Scenario Lane, Los Angeles, CA 90077,
or pay online at www.BeverlyGlen.org.



Name _____

Address _____

Phone _____

Email _____

www.beverlyglen.org



www.beverlyglen.org
Los Angeles, CA 90077
10409 Scenario Lane
Les River Community Center
Residents of Beverly Glen, Inc.